

TRAVEL SNAP CARDS

SHAPE & COLOR



In the world of mobile smartphone travel photography, you have one main disadvantage, and that is the limitation of a fixed optical lens. Don't ever use the digital zoom feature, as it doesn't produce professional results. With a fixed lens, your composition becomes critical to creating eye-catching travel photography. Two of your best composition options are shape and color.

PRINT SIZE: A5
14cm x 21cm /
5.83" x 8.27"

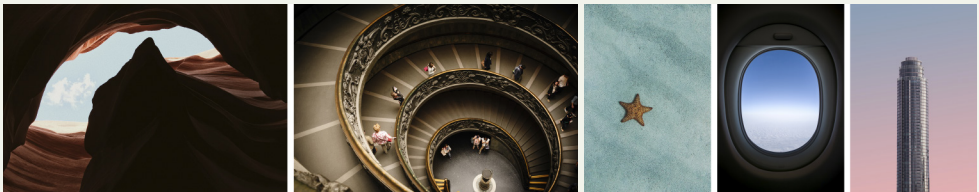
Travel with your DSLR or mirrorless camera system, but also always have your mobile phone at the ready. The immediacy of the mobile phone camera will allow you to capture images that you might miss while readying a complex camera. Train to see in shapes and colors.

SHAPE IT UP

Shape and color are dominant visual elements. Shape in particular is rooted in our subconscious. A strong shape will always attract immediate attention.

A real benefit to focusing your attention to color and shape is that you will find it everywhere. You will find it in nature, architecture, and even when you're photographing people.

As a mobile smartphone travel photographer train yourself to look at a scene with a less literal eye. Experiment with squinting your eyes as this reduces a scene to shapes and colors. It can help you identify interesting elements of the shapes and colors technique.



COLORS THEMSELVES TELL A STORY



This photograph from Seville, Spain illustrates the power of color. Can't you visualize it as a magazine cover? Most areas of the world are known for certain colors or color combinations. Notice how the colors reflect the locations, in this case Spain's flag.

PRO TIP!

Capitalize on shapes and colors with your mobile photography efforts. Another technique is to use complementary colors.

